



IA 136/JOHNSON ST. RECONSTRUCTION UPDATE #11

DATE:

August 23, 2024

PROJECT UPDATE #11

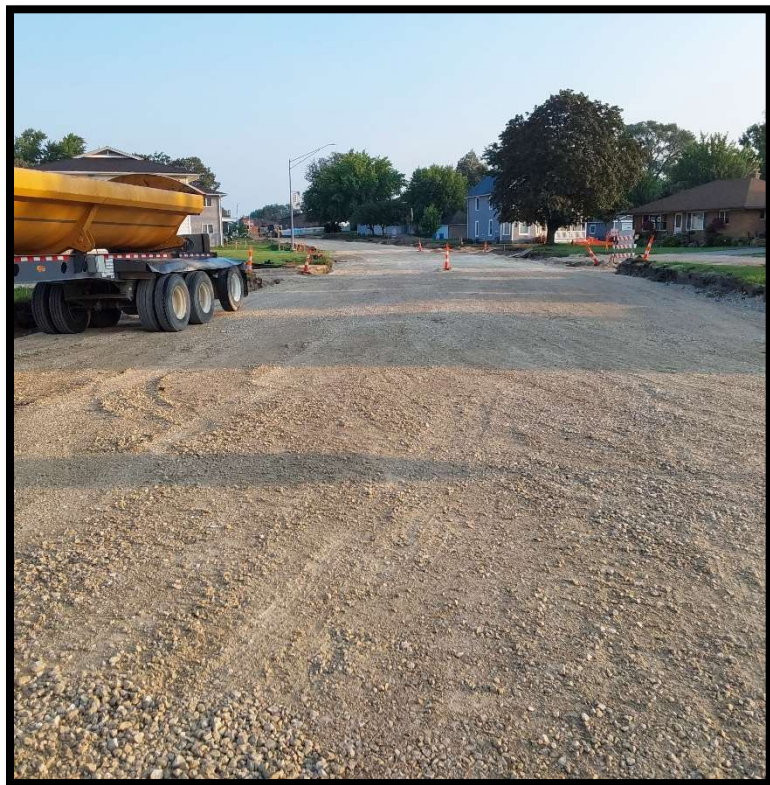
The contractor had another productive week on the IA 136/Johnson St. Reconstruction project. Monday there were multiple crews working on the project. The intake crew formed and poured two drainage structures. The grading crew completed the remainder of the subdrain, geogrid and subbase to the north end of the project.

Tuesday the grading crew had to pull off site for the day to tend to another project. The intake crew poured two additional storm drainage structures.

Wednesday the grading crew started pavement removal and coreout on the south end of the project near BARD's driveway. The crew removed material to the north about 250 feet.

Thursday the grading crew continued pavement removal and coreout on the rural portion of the project, removing about another 250 feet of material as well as starting to dig in subdrain on that stretch..

Friday the grading crew finished installing subdrain, geogrid and subbase on the 500 feet of roadway they had cored out the days prior. This work got them to about 200 feet from the park entrance. Access to the park entrance will remain from 4th/5th Avenue until the end of day Monday, when it will switch back to being from the south, weather permitting. From this point forward, access to the park will be on rock surfacing and through an active construction site. Patience and vigilance from motorists will be required when in this area.



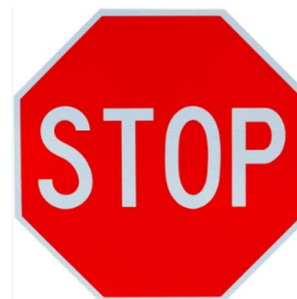
Project Update #11

As of now, the plan for next week is to finish the removals, coreout, subdrain, geogrid, and subbase placement on the rural section of the project to meet up with the urban section at the 4th Ave. intersection. Paving prep on the urban section of the project may also begin at the end of next week. As paving time nears, an abundance of stakes will be placed on and around the site that assists the contractor in paving the roadway. Please do not touch these, as they are vital for the contractor during paving. Also, with paving just around the corner, there will be an increase of work vehicles parking on the side streets of the project due to the manpower needed during paving time. These vehicles are not able to be parked on grade due to the work being performed, but also need to be close enough to the work area so tools, forms, supplies, etc. are easily accessible. This means there may be times when you will need to park a few spots further from your house than normal.

For those who live and travel throughout the project corridor on a regular basis, please use caution around the ongoing construction. Midwest, and their subcontractors, may have multiple crews working at any given time.

PLEASE STAY ON PUBLIC ROADWAYS

As a reminder, neither Medical Associates nor White Front's driveways should be used as a through roadway. Those are on private property and can be considered trespassing if not used correctly. To aid in town traffic, the city has made some traffic changes on Buchanan St. SW to allow traffic in both directions to 1st Ave. Please be sure to obey stop signs and the speed limit.



If you have questions throughout construction, please do not hesitate to contact MSA or Lisa Kotter, the City Administrator.